

UV-C Batten Disinfection

A fixed luminaires on the ceiling and used in controlled times for disinfection of rooms or enclosed spaces. With many years in lightning industry, Philips UV-C Battens helps you to easily disinfect high contact areas such as meeting rooms, offices, restaurants and supermarkets.

Benefits

- In laboratory testing, Signify's UV-C light sources inactivated 99% of SARS-CoV-2 virus on a surface with an exposure time of 6 seconds.
- Efficient and most effective way of disinfection with useful long lifetime of lamp and luminaires.
- Eco-Friendly - zero ozone emission during and after use.

Features

- Lamp configurations possible: 1-lamp or 2-lamps version.
- Available: bare batten or with reflectors.
- Philips T8 TUV lamp included: 36W.
- Shortwave UV radiation peak at 253.7 nm (UVC).
- High reflective aluminum housing for better reflectivity and performance.

Bare



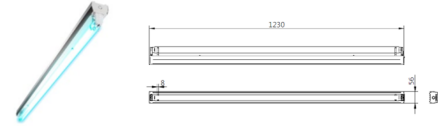
Reflector



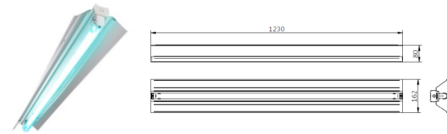
UV-C Disinfection Batten

MODEL

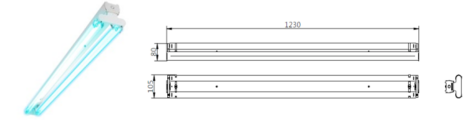
TMS160C 1X36W TUV SLV/6	Dimension (mm)	Weight (KG)
	1230*56*80	1.00



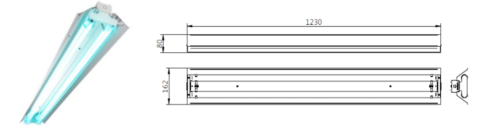
TMS160C 1X36W TUV SLV/6 R	Dimension (mm)	Weight (KG)
	1230*105*80	1.14



TMS160C 2X36W TUV SLV/6	Dimension (mm)	Weight (KG)
	1230*162*80	1.90



TMS160C 2X36W TUV SLV/6 R	Dimension (mm)	Weight (KG)
	1230*162*80	2.04



BODY KIT



Aluminum
Reflector



Aluminum
Cover



BJB Lamp
Holder



Accessories
(included with packaging)

SPECIFICATIONS

Input Voltage, Frequency	220-240V-(±10%), 50/60Hz
Power Factor (full load)	≥ 0.9
Electrical class	Class I
External wiring	terminal block inside with a hole on the casing
Lamp holder type	G13 (Medium Bi-Pin Fluorescent)
Ballast	913713031566 HF-P 136 TL-D III 220-240V 50/60 Hz 913713031666 HF-P 236 TL-D III 220-240V 50/60 Hz
Housing material	SPCC, thickness - or > 0.4mm
Top cover	Anodize aluminum sheet, Thickness 0.4 mm
IP protection	IP20
IK protection	IK02
Installation	Surface & Suspended mounting
Working temperature	-10°C ~45°C

Operating and Electrical			
Full Product Name	Lamp Current	Voltage	Power
	A	V	W
TMS160C 1X36W TUV SLV/6	0.18	220-240	36
TMS160C 2X36W TUV SLV/6	0.36	220-240	2x36
TMS160C 1X36W TUV SLV/6 R	0.18	220-240	36
TMS160C 2X36W TUV SLV/6 R	0.36	220-240	2x36

Sustainability	China RoHS 2.0 & REACH
Approbation	CCC/CB/EMC/CE/SAA/IEC60598 (Safety)
Lifetime	25,000 hours
Switch cycle	>35,000 times (daily on and off 10 times)
Lamp type	Philips TUV T8 36w SLV/6 (12NC 928048604003)
Mercury (Hg) Content (Nom)	2 Mg
Lamp Effective Lifetime	9000 Hrs
Net Weight	135.00 Gm
Power Rated	36W
UV-C Radiation at 100 hr	15.0 W
Color Code	TUV
Depreciation at Useful Lifetime	10%

UV-C Radiation	
Full Component Name	UV-C radiation luminaries
	W
TMS160C 1X36W TUV SLV/6	14
TMS160C 2X36W TUV SLV/6	28
TMS160C 1X36W TUV SLV/6 R	12.5
TMS160C 2X36W TUV SLV/6 R	24